



WARNE

SCOPE MOUNTS

SET YOUR SIGHTS ON WARNE





OUR COMPANY

was founded 23 years ago by gun industry pioneer John L. (Jack) Warne. His vision was to design and build the best scope mounts in the business for the greatest value. Over the years, the Warne Scope Mounts product line has earned a great reputation for high quality, superb functional performance and good looks. In 2001, Jack sold the company to Charlie Lake who has taken Jack's vision to the next level. He incorporated Lean Manufacturing and invested in CNC technology and tooling to achieve increased quality, productivity and consistency. Each year we strive to give our customers faster availability, increased quality and continued cost improvement. Our customers come from all over the world and know our reputation is worth it's weight in gold. We look forward to this new year and hope you continue to "Set Your Sights on Warne".

WARNE SCOPE MOUNTS

strives to provide the best service possible. In doing so, we encourage you to call us with any questions you may have regarding our products or if you need assistance in selecting the right scope mount components. Please call us at 1-800-683-5590 or 503-657-5590 and one of our helpful and knowledgeable staff will assist you.

CONTENTS

NEW Products	4
Quick Detach Rings	6
Fixed/Permanent Attach Rings	8
Grooved Receiver Line	10
Multi-Sight Systems	12
Steel Bases	14
AR-15 Flat Top Rings	16
Tactical Rings	18
Tactical Bases	19
AR Accessories	20
R.A.M.P. Mount	22
Team Warne	24
Sponsorship & Events	27

WARNE SCOPE MOUNTS
 9500 SW Tualatin Road
 P.O. BOX 2390
 Tualatin, OR 97062
 U.S.A.

Phone: 1-800-683-5590 or 503-657-5590
 Fax: 503-657-5590
 Customer Service Email: info@warnescopemounts.com
 Technical Support Email: tech@warnescopemounts.com
 Website: www.warnescopemounts.com



OUR QUALITY GUARANTEE

assures you that our products will perform flawlessly or we will gladly replace them. WARNE's quality and reliability are the very best in the industry. We want you to be satisfied and confident that we stand behind our products every time. We also guarantee where every mount is manufactured - from the original source of the raw material all the way down to the packaging - we take pride in claiming these four words...

MADE IN THE USA




Warne Scope Mounts Factory
 Tualatin, Oregon USA



New products for 2013

Each year Warne Scope Mounts strives to create new and improved mounting systems that meet our customer's growing needs. This year our selection includes a variety of new bases as well as new 7.3/22 Rings and one piece mounting systems for AR Platforms. Check out our Scope Ring and Base Charts (pull out insert) for details on all new part numbers.

2013 Maxima 2 Piece Steel Bases

M904/922 - Designed to fit the Browning A-Bolt Slug-Gun. These steel two piece Weaver Style bases are available in matte black, gloss black and silver finishes.



2013 Tactical 1 Piece Rails

Solid steel construction with 1913 Mil-Spec design cross slots. Now available for the following models:

M649 - FNH SPR Short Action with 8-40 screws

M666-20-8 - Savage Accu-Trigger Short Action with 8-40 screws (20 MOA Rail)

M667-20-8 - Savage Accu-Trigger Long Action with 8-40 screws (20 MOA Rail)



2013 Maxima 1 Piece Bases

Made from sintered steel with Weaver style cross slots. Now available for the following models:

M960 - Mauser 98 Altered/Unaltered with one rear screw hole

M996 - Browning BAR, BAR II, Mark II, BLR Lightweight, BRP Pump



2013 7.3/22 30mm Rings

These rings will fit all of the models that our current 7.3/22 rings fit but will now be available in the Fixed style for a 30mm tube size. Refer to page 10 or the Ring Chart insert for available part numbers.



2013 34mm R.A.M.P Mount

Now available in the 34mm ring size and all colors (except Zombie Green). Refer to pages 22-23 or the chart insert for more information.



2013 Skeletonized AR Mount

The Skeletonized AR Mount is the newest addition to our AR scope mounting line. This new mount offers a lightweight scope mounting solution for your AR style firearm with the same durable, return to zero reputation that you've come to expect from Warne. See page 21 for more information and part numbers.

- › Lightweight, Skeletonized 6061 aluminum body and caps to reduce overall weight without sacrificing reliability.
- › #8 Torx style fasteners with steel threaded inserts to prevent stripping.
- › Cantilever forward design to provide additional eye relief.
- › Places your optic at the Ideal Height for AR and similar platforms.
- › 1/2" tactical nut attachment, 65 in/lb. of torque is recommended.
- › Available in 1", 30mm & 34mm tube sizes and matte black, dark earth, blue and red finishes.



2013 Team Warne ZOMBIE R.A.M.P. Mounts - For AR Platforms

- › 6000 Series Aluminum
- › #8 Torx style fasteners with steel threaded inserts
- › Cantilever design for proper optics mounting
- › Up to 2 integrated mounting rails (with the option to remove one or both) for optimal sighting or light systems
- › 1/2" tactical nut attachment, 65 in/lb. of torque is recommended
- › Zombie Green is available in 30mm tube size only



2013 Team Warne ZOMBIE A645 Mount - For AR Platforms

The A645 mount is a 45° side rail that is designed to co-witness with the side rails of the R.A.M.P. mount to allow the use of pop up or fixed type combat/open sights. Available in Zombie Green with Team Warne lasered on top. See page 20 for more details.

SET YOUR SIGHTS ON ~~WARNE~~ ZOMBIES

THE ZOMBIE HORDE COMETH, GET YOUR MOUNTS BEFORE IT'S TOO LATE...

Maxima Quick Detach Rings are the most durable and versatile quick detachable mounting systems available. Each ring is precision CNC machined from sintered steel, a process that allows intricate steel parts to be formed and then fired - retaining the strength properties of steel while adding the necessary ductility that scope mounts require for perfect contact around the circumference of the scope.

The Maxima QD Rings sport the unique Warne indexable lever system which allows the user to remove the optics from the rifle then reattach it without the loss of zero, as well as allowing the location of the lever to be indexed once the rings are affixed to the bases. After the levers are tightened, simply pull out on the lever, turn it to the desired location then let it snap into place. When used on the all steel Warne Maxima Bases, we guarantee accuracy of within $\frac{1}{4}$ of an inch at 100 yards when removing and reattaching the optic. Also unique to the industry, the Maxima QD Rings have a square stainless steel recoil control key. This ensures a positive recoil engagement surface across the full width and depth of the recoil slot in the base. The recoil control key guarantees that the rings will not shift or move under fierce recoil and also protects against peening or swaging when mounted on aluminum bases.

Finally, the Maxima QD Rings are finished with either a durable DuPont powder coat in matte black, gloss black, or electroless nickel for a silver look and then assembled with 4 quality Torx style T-15 socket cap screws.

QD RING FEATURES

- › Quickly detach and reattach the Maxima QD rings with no loss of zero.
- › Square recoil control key for positive engagement of ring to base.
- › Indexable lever allows placement of the levers in any position desired.
- › Rings securely mount around scope using 4 Torx style T-15 socket cap screws, 25 in./lb. of torque recommended.



Square Recoil Keys

Warne Maxima Quick Detach Rings have square stainless steel recoil control keys. These keys ensure maximum bearing surface to the receiving bases. This protects against swaging from heavy recoil and also provides a solid positive surface for repeatability of zero.

Warne Tip: When installing Warne Rings slide both rings forward in the base slot so the recoil key is contacting the front of the cross slot, then tighten the screws. Visit our website at www.warnescopemounts.com to view our installation videos.



QD RING MODELS

Part Number	Ring Height (RH)	Available Finish		Tube Size
		High	Low	
 200L	Low	.250"	G, M, S	1"
201L	Med	.375"	G, M, S	1"
202L	High	.525"	G, M, S	1"
203L	Extra High	.650"	G, M, S	1"
204L	Ultra High	.935"	G, M, S	1"
 213L	Low	.250"	G, M, S	30mm
214L	Med	.375"	G, M, S	30mm
215L	High	.525"	G, M, S	30mm
216L	Extra High	.650"	G, M, S	30mm
217L	Ultra High	.850"	G, M, S	30mm
 220L	Low	.250"	G, M, S	34mm
221L	Med	.375"	G, M, S	34mm
222L	High	.525"	G, M, S	34mm



Ring Height (RH)

Ring Height (RH) is calculated from the top of the base (or integral dovetail) to the bottom of the scope tube.

WARNE TOOLS

» TW1 Torque Wrench

Built for Warne by California Torque Products, this tool allows the shooter to precisely tighten the Torx style screws to Warne's recommended torque setting of 25 in/lb. The simple break away design lets the operator know when the proper torque has been reached. Designed for both bases and rings, this unit is a must have when installing or re-installing Warne mounting systems.



» ST1 Shooting Tool

The Warne Shooting Tool is designed to be a shooter's one and only tool when going to the range. This piece has five hex drivers, three Torx style drivers and one 5mm flat blade.



Removing the Quick Detach Rings



While firmly holding your firearm in an upright position, turn the levers counter clockwise 2 full turns. This action releases the clamping mechanism from the base. It is recommended that the firearm is unloaded and the safety is engaged.



Once the levers have been turned and the clamp is released, the scope and detachable rings may be lifted from the mounting bases. Store your scope with attached rings in a safe, padded dry place between uses.



To reattach, simply place the square recoil keys into the base slots and push the rings and the scope forward to seat the keys against the base slot. Turn levers clockwise until tight, then pull out on the lever to index as desired.



Maxima Fixed Rings

are designed to be the strongest, most durable fixed mounting system available. Typical steel scope mounts in this class use only 2 screws per ring, have a narrower clamping band and in most cases only absorb recoil in the front ring. Maxima Fixed Rings utilize 4 T-15 Torx style socket cap screws for secure optics mounting. The Maxima Fixed Ring Series fit Weaver style cross slot bases and incorporate a Warne square stainless steel recoil control key in both the front and rear rings. This ensures a "no slip" positive recoil surface across the entire slot of the base and is capable of withstanding the heaviest of recoil. The Maxima square recoil key also protects against swaging or peening of the bases when used on softer or less durable materials. The Maxima Fixed Ring band is also substantially wider for additional clamping surface around the scope to hold the optic firmly in place. The Maxima Fixed Rings are available in a durable DuPont powder coat finish in either matte or gloss black and also an electroless nickel finish. Warne Maxima Scope Rings are designed to fit Warne bases as well as all Weaver cross slot and Mil-Spec Picatinny style bases and rails.



FIXED RING FEATURES

- › Permanently attaches to base.
- › Square recoil control key for positive engagement of ring to base.
- › Rings securely mount around scope using 4 Torx style T-15 socket cap screws, 25 in/lb. of torque recommended.
- › Available in matte black, gloss black or silver finish.

Square Recoil Keys

Warne Maxima Quick Detach Rings have square stainless steel recoil control keys. These keys ensure maximum bearing surface to the receiving bases. This protects against swaging from heavy recoil and also provides a solid positive surface for repeatability of zero.

Warne Tip: When installing Warne Rings slide both rings forward in the base slot so the recoil key is contacting the front of the cross slot, then tighten the screws. Visit our website at www.warnescopemounts.com to view our installation videos.



FIXED RING MODELS

	Part Number	Ring Height (RH)	Available Finish (Gloss, Matte, Silver)	Tube Size
	200	Low .250"	G, M, S	1"
	201	Med .375"	G, M, S	1"
	202	High .525"	G, M, S	1"
	203	Extra High .650"	G, M, S	1"
	204	Ultra High .935"	G, M, S	1"
	213	Low .250"	G, M, S	30mm
	214	Med .375"	G, M, S	30mm
	215	High .525"	G, M, S	30mm
	216	Extra High .650"	G, M, S	30mm
	217	Ultra High .850"	G, M, S	30mm
	220	Low .250"	G, M, S	34mm
	221	Med .375"	G, M, S	34mm
	222	High .525"	G, M, S	34mm

WARNE TOOLS

» TW1 Torque Wrench

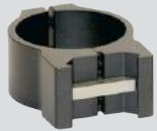
Built for Warne by California Torque Products, this tool allows the shooter to precisely tighten the Torx style screws to Warne's recommended torque setting of 25 in/lb. The simple break away design lets the operator know when the proper torque has been reached. Designed for both bases and rings, this unit is a must have when installing or re-installing Warne mounting systems.



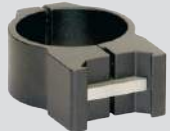
» ST1 Shooting Tool

The Warne Shooting Tool is designed to be a shooter's one and only tool when going to the range. This piece has five hex drivers, three Torx style drivers and one 5mm flat blade.





213M
Low .250"
30mm Tube



214M
Med .375"
30mm Tube



215M
High .525"
30mm Tube



216M
Extra High .650"
30mm Tube





The **Maxima Grooved Receiver Line** is designed to fill the need of mounting scopes to rifles with an integrated receiver mounting rail. Since each firearm manufacturer has their own proprietary mounting rail design, each ring model must be machined to exacting tolerances for proper fit and function. These Warne rings fit right onto the receiver's dovetail with no need for a mounting base.

GROOVED RECEIVER LINE FEATURES

The precision CNC machined Warne Rings provide unsurpassed strength, durability and quality for a variety of rifle models:

- › Ruger #1, Blackhawk & Mini 14
- › CZ527 (16mm dovetail)
- › Ruger M77, Hawkeye & Super Redhawk
- › Tikka
- › CZ550 (19mm dovetail)
- › Rifles with a 3/8" or 11mm dovetail









7.3/22 Rings

The 7.3/22 rings are the strongest small bore rings available. They are designed to fit a very wide selection of rifles with either a 3/8" or 11mm dovetail. This is made possible by using a solid asymmetrical reversible clamp that be flipped 180° and used on wider or narrower dovetails for the best fit.

The 7.3/22 rings are vastly different in design from our Maxima line of mounts. These rings weigh less due to their 70/30 horizontal construction and are only 1/2" wide. Attachment is made to the dovetail using a single T-15 Torx style fastener and have two of the same fasteners for the ring top strap holding the entire package securely together.

7.3/22 MODELS

	Part Number	Ring Height (RH)	Available Finish Gloss, Matte, Silver	Ring Style	Tube Size
	721	Med .400"	G, M, S	FIXED	1"
	722	High .525"	G, M, S	FIXED	1"
	721L	Med .400"	G, M, S	QD	1"
	722L	High .525"	G, M, S	QD	1"
	731	Med .400"	G, M, S	FIXED	30mm
	732	High .525"	G, M, S	FIXED	30mm



Warne Tip: When installing the 7.3/22 rings be sure to notice which direction the small dot on the side clamp is facing. If it is in the 'up' position the rings will fit a 3/8" dovetail and if the dot is facing 'down' it will fit an 11mm dovetail.

A971 Picatinny Rail Adapter - Fits Ruger Mini 14, 30, 77/22, 77/44, PC-9 and PC-40



Designed to attach to the Ruger style integral dovetail to convert the mount style to a Mil-Spec 1913 Picatinny rail design. With 1913 rail Mil-Spec, multiple-sight systems such as; red dot, holographic, reflex, and standard magnified optical sighting is available to the shooter. Constructed of aluminum and available in matte black, gloss black and silver finishes. Works with Warne Maxima Quick Detach Rings.



WARNE TOOLS

» TW1 Torque Wrench

Built for Warne by California Torque Products, this tool allows the shooter to precisely tighten the Torx style screws to Warne's recommended torque setting of 25 in/lb. The simple break away design lets the operator know when the proper torque has been reached. Designed for both bases and rings, this unit is a must have when installing or re-installing Warne mounting systems.



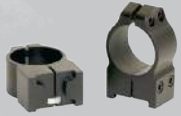
» ST1 Shooting Tool

The Warne Shooting Tool is designed to be a shooter's one and only tool when going to the range. This piece has five hex drivers, three Torx style drivers and one 5mm flat blade.



GRL RING MODELS

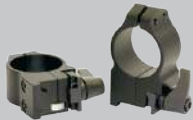
RUGER #1, BLACKHAWK & MINI 14



Part Number	Ring Height (RH)	Available Finish Gloss, Matte, Silver	Ring Style	Tube Size
1R	Med .460"	G, M, S	FIXED	1"
2R	High .585"	G, M, S	FIXED	1"
14R	Med .460"	G, M, S	FIXED	30mm
15R	High .585"	G, M, S	FIXED	30mm
1RL	Med .460"	G, M, S	QD	1"
2RL	High .585"	G, M, S	QD	1"
14RL	Med .460"	G, M, S	QD	30mm
15RL	High .585"	G, M, S	QD	30mm



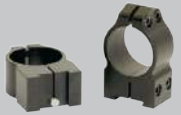
RUGER M77 & HAWKEYE



1R7	Med .460"	G, M, S	FIXED	1"
2R7	High .585"	G, M, S	FIXED	1"
14R7	Med .460"	G, M, S	FIXED	30mm
15R7	High .585"	G, M, S	FIXED	30mm
1R7L	Med .460"	G, M, S	QD	1"
2R7L	High .585"	G, M, S	QD	1"
14R7L	Med .460"	G, M, S	QD	30mm
15R7L	High .585"	G, M, S	QD	30mm



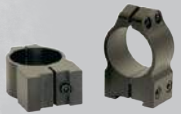
TIKKA



1T	Med .460"	G, M, S	FIXED	1"
2T	High .570"	G, M, S	FIXED	1"
14T	Med .460"	G, M, S	FIXED	30mm
15T	High .570"	G, M, S	FIXED	30mm
1TL	Med .460"	G, M, S	QD	1"
2TL	High .570"	G, M, S	QD	1"
14TL	Med .460"	G, M, S	QD	30mm
15TL	High .570"	G, M, S	QD	30mm



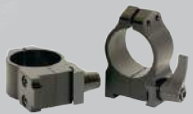
CZ 527



1B1	Med .425"	G, M	FIXED	1"
2B1	High .535"	G, M	FIXED	1"
14B1	Med .425"	G, M	FIXED	30mm
15B1	High .535"	G, M	FIXED	30mm
1B1L	Med .425"	G, M	QD	1"
2B1L	High .535"	G, M	QD	1"
14B1L	Med .425"	G, M	QD	30mm
15B1L	High .535"	G, M	QD	30mm



CZ 550



1B	Med .425"	G, M	FIXED	1"
2B	High .535"	G, M	FIXED	1"
14B	Med .425"	G, M	FIXED	30mm
15B	High .535"	G, M	FIXED	30mm
1BL	Med .425"	G, M	QD	1"
2BL	High .535"	G, M	QD	1"
14BL	Med .425"	G, M	QD	30mm
15BL	High .535"	G, M	QD	30mm



Ring Height (RH) is calculated from the top of the base (or integral dovetail) to the bottom of the scope tube.

Ring Height (RH)

The **Maxima Multi-Sight System** has a proven track record for success. Hugely popular with the Smith & Wesson K, L, N and X frame revolvers, the Maxima line also includes the Dan Wesson large frame 445 Supermag.

Warne's unique Maxima Multi-Sight Systems allow for a variety of sighting combinations. The user may choose between optics, iron sights and quick acquisition sights without the loss of zero. The Maxima MSS also permits the optical sights to be quickly removed, allowing use of the integrated factory iron sights. A shooter may have several sighting systems, ammunition types and multiple sighted-in distances for each - ready to go.

Whether you're hunting, at target practice, using separate loads or protecting yourself, your hunting handgun's sight limitations are eliminated with the use of the Maxima Multi-Sight System.

MULTI-SIGHT SYSTEM FEATURES

- › Allows scope attachment to integrated rail.
- › Securely mounts to gun with Torx style T-15 socket cap screws, 25 in/lb. of torque recommended.
- › Compatible with the Maxima Quick Detach Rings for multiple sighting options.
- › Available in matte black, gloss black or silver finish.



MSS MODELS

Part Number	Manufacturer & Model	Available Finish Gloss, Matte, Silver
M630	Dan Wesson 445 Supermag VH	G, M, S
M629	S&W L, K and N Frame Revolver	G, M, S
M500	S&W X Frame Revolver	G, M, S



» SMITH & WESSON - X FRAME

An addition to the Maxima Multi-Sight System Line is the M500 base. This updated Maxima X Frame Multi-Sight base has proven itself worthy even when the most powerful loads are used. Because of the substantial recoil of the Smith & Wesson X Frame revolvers; we have developed a new multi-sight base specifically for the X frame. While some customers have used our original M629 base for the X frame, it was designed specifically for the K, L and N frames and the weight and strength of the base was a concern. To solve this issue the updated X frame mount has additional material added to the front underside of the base as well as longer screws to reach more of the mammoth handgun's top strap. A special heat treat process has also been applied to provide maximum rigidity.



602M - Tactical Rings



M500M - S&W 500 Base



» Dan Wesson

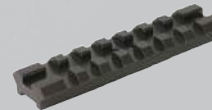
The M630 base fits the Dan Wesson 44S Supermag and works in conjunction with the Maxima Quick Detach rings.



202LM - QD Rings



M630M - Dan Wesson Base



WARNE TOOLS

» TW1 Torque Wrench

Built for Warne by California Torque Products, this tool allows the shooter to precisely tighten the Torx style screws to Warne's recommended torque setting of 25 in/lb. The simple break away design lets the operator know when the proper torque has been reached. Designed for both bases and rings, this unit is a must have when installing or re-installing Warne mounting systems.



» ST1 Shooting Tool

The Warne Shooting Tool is designed to be a shooter's one and only tool when going to the range. This piece has five hex drivers, three Torx style drivers and one 5mm flat blade.





LEUPOLD

0711663

LEUPOLD OPTICS
LEUPOLD OPTICS
LEUPOLD OPTICS

Maxima Steel Bases are precision CNC machined from solid steel and are held to very tight tolerances. The Maxima Steel Bases are modeled around the popular Weaver design, which is one of the strongest and most versatile mounting systems available today. The low profile of the Maxima Steel Bases give your firearm a sleek look. When used in conjunction with Warne Maxima QD Rings, the shooter is able to utilize the open sights by looking over the top of the bases without sacrificing the normal shooting position behind the firearm.

Maxima Bases also offer a full width recoil slot in each base. This feature allows the recoil control keys of Warne Rings to attain maximum bearing surface.

Maxima Steel Bases are available in cold drawn steel and sintered steel. See the Base Chart for available part numbers and also for a small selection of aluminum bases.

MAXIMA STEEL BASE FEATURES

- › Low profile design allows use of iron sights when optics are removed.
- › Full width and depth recoil slots provide maximum bearing surface for recoil key engagement.
- › Bases securely mount to your gun with Torx-style T-15 socket cap screws, 25 in/lb. of torque is recommended.
- › Available in cold drawn steel or sintered steel. (See the base chart for specific part numbers)



The Maxima 2 piece steel bases are available for a large variety of firearm models. Shown here is the M902/876M base set that fits a Remington 700 and the Weatherby Vanguard models. These style of bases are available in matte black, gloss black and silver finishes. Refer to our base chart (pull out insert) for all applications and models.

The Maxima 1 piece Weaver style bases are available for a small selection of firearm models. Shown here is the M987M base that fits a Thompson Center Encore, Omega and Triumph Bone Collector models. This style of base is available in matte black, gloss black and silver finishes. Refer to our base chart (pull out insert) for all applications and models.



This Maxima 1 piece base is a sporterized version featuring a cut out section and Weaver style cross slots. Shown here is the M968M base that fits a Weatherby Vanguard short action model. Similar bases are also available for the Weatherby Mark V models. Available in matte black, gloss black and silver finishes. Refer to our base chart (pull out insert) for all applications and models.



The **Maxima Steel Bases** mount with a low profile. Once you have removed your scope with the Maxima Quick Detach Rings, the view of your iron sights is not obstructed.

EXTENSION BASES

The Warne Extension Bases are available for a wide variety of firearms to help achieve correct eye relief and to give mounting solutions for scopes with a short tube. These bases can be installed in either direction; with the cross slot towards the rear or to the front of the firearm. This will give the shooter the option to bring the scope closer or further away to attain the ideal shooting position. See the Base Chart (pull out insert) for available part numbers and applications.

Pictured here is a standard M902M base in comparison to the M904M and M905M Extension Bases. The M904M base provides .554" more in length and the M905M base provides .854" more in length.



WARNE TOOLS

» TW1 Torque Wrench

Built for Warne by California Torque Products, this tool allows the shooter to precisely tighten the Torx style screws to Warne's recommended torque setting of 25 in/lb. The simple break away design lets the operator know when the proper torque has been reached. Designed for both bases and rings, this unit is a must have when installing or re-installing Warne mounting systems.



Maxima AR-15 Flat Top Rings are precision CNC machined from sintered steel or aircraft grade aluminum for reduced weight. Both models incorporate the Warne stainless steel recoil control keys for superior absorption and a positive lock for guaranteed return to zero.

The Maxima AR-15 Flat Top Rings also feature the Warne Quick Detach double lever system for fast removal and installation. This feature allows the use of multiple optics without the loss of zero. The rings are designed to locate the reticle of the optic to be precisely the same height as factory iron sights; giving the operator the same positioning behind the weapon regardless of which sight system is being deployed. Maxima AR-15 Flat Top Rings are ideal for operators who may require different types of sighting systems depending on the situation.

MAXIMA AR-15 FLAT TOP RING FEATURES

- › Quickly detach and reattach the Maxima QD Rings with no loss of zero.
- › Allows for rapid use of multiple types of sighting systems.
- › Square stainless steel recoil control key for positive engagement of ring to base and superior recoil absorption.
- › Rings securely mount around scope using Torx style T-15 socket cap screws, 25 in/lb. of torque recommended.



The Maxima AR-Flat Top Rings are the *IDEAL HEIGHT* for AR platforms.

FLAT TOP RING MODELS

	Part Number	Ring Height (RH)	Available Finish Gloss, Matte, Silver	Ring Style Quick Detach or Fixed	Tube Size
ALUMINUM					
	A204L	Ultra High .935"	G, M, S	QD	1"
	A217L	Ultra High .850"	G, M, S	QD	30mm
	A604	Ultra High .935"	M	FIXED	1"
	A617	Ultra High .850"	M	FIXED	30mm
STEEL					
	204L	Ultra High .935"	G, M, S	QD	1"
	217L	Ultra High .850"	G, M, S	QD	30mm
	604	Ultra High .935"	M	FIXED	1"
	617	Ultra High .850"	M	FIXED	30mm
ALUMINUM - AIMPOINT					
<p>(sold singly, not as a set)</p>	A618	Ultra High .850"	M	FIXED	30mm
	A218L	Ultra High .850"	M	QD	30mm

* All rings compatible with Picatinny or Weaver style bases

WARNE TOOLS

» TW1 Torque Wrench

Built for Warne by California Torque Products, this tool allows the shooter to precisely tighten the Torx style screws to Warne's recommended torque setting of 25 in/lb. The simple break away design lets the operator know when the proper torque has been reached. Designed for both bases and rings, this unit is a must have when installing or re-installing Warne mounting systems.



» TW65 TORQUE WRENCH

Also, built for Warne by California Torque Products, this new tool allows the shooter to precisely tighten the 1/2" hex nut to the proper torque setting of 65 in/lb. This unit is a must have when installing Warne's Tactical and AR-15 Flat Top Rings.





Warne Tactical Rings

and Bases are engineered to withstand the most demanding conditions and situations of tactical shooting applications. Precision CNC machined steel provides strength, ductility and the durability you have come to expect from Warne Scope Mounts. The Maxima Tactical Rings have three primary differences from the rest of the Warne line of rings; a 22% wider body for additional clamping around the scope tube and the mounting base, a 1/2" hex nut for clamping the ring to the base that easily accepts the Mil-Spec 65 in/lb. of torque; and lastly, the addition of up to eight T-15 Torx style body screws, depending on the ring model for superior holding power.

TACTICAL RING FEATURES

- › 22% wider ring body provides extra grip around the scope tube.
- › Rings have up to eight T-15 Torx style screws for superior holding, 25 in/lb. of torque recommended.
- › 1/2" hex nut for clamping the rings to the base, 65 in/lb. of torque recommended.
- › Stainless steel recoil control key for superior recoil absorption.



Warne Tactical rings have up to eight T-15 Torx style screws per ring for superior holding and strength.

TACTICAL RING MODELS

	Part Number	Ring Height (RH)	Available Finish Gloss, Matte, Silver	Ring Style Quick Detach or Fixed	Tube Size
	601	Med .440"	M	FIXED	1"
	602	High .525"	M	FIXED	1"
	603	Extra High .650"	M	FIXED	1"
	604	Ultra High .935"	M	FIXED	1"
	614	Med .440"	M	FIXED	30mm
	615	High .525"	M	FIXED	30mm
	616	Extra High .650"	M	FIXED	30mm
	617	Ultra High .850"	M	FIXED	30mm

WARNE TOOLS

» TW1 Torque Wrench

Built for Warne by California Torque Products, this tool allows the shooter to precisely tighten the Torx style screws to Warne's recommended torque setting of 25 in/lb. The simple break away design lets the operator know when the proper torque has been reached. Designed for both bases and rings, this unit is a must have when installing or re-installing Warne mounting systems.



» TW65 TORQUE WRENCH

Also, built for Warne by California Torque Products, this new tool allows the shooter to precisely tighten the 1/2" hex nut to the proper torque setting of 65 in/lb. This unit is a must have when installing Warne's Tactical and AR-15 Flat Top Rings.



601M - Med .440" - 1" Tube

602M - High .525" - 1" Tube



Warne Tactical Bases are designed around the Mil-Spec 1913 Picatinny rail system. Machined from solid steel in both standard and 20 MOA configurations, Warne Tactical Bases provide a strong and true platform for optics mounting and offer one of the most comprehensive selection of these types of bases.

TACTICAL BASE FEATURES

- › Warne Tactical Bases allow the use of Picatinny or standard Weaver style rings.
- › Constructed of solid steel and machined in both standard and 20MOA configurations, matte black only.
- › Cross slots feature the 1913 Mil-Spec design.
- › Bases securely mount to your gun with T-15 Torx style screws, 25 in/lb. of torque recommended.



603M - Extra High .650" - 1" Tube

604M - Ultra High .935" - 1" Tube



The Tactical Bases are available for several popular firearm models including Remington, Savage, Winchester and Weatherby. See the Base Chart (pull out insert) for all available part numbers.

AR Accessories

Warne Scope Mounts also provides additional mounting systems for your scope and these specialty mounts will hold true in any situation and will eliminate adjustments forever.

ARCH-DP Mount

Now there's a way to mount a red dot or reflex sight without removing your Carry Handle. The ARCH mount (AR Carry Handle) is designed to attach directly to your carry handle with no modification to you AR, it puts your favorite red dot or reflex sight in "co-witness" alignment with your factory combat sights. At just 3 oz. and made of 6061 aluminum, the ultra light, ultra stable ARCH-DP mount will accept the Leupold Delta Point, JPoint, Fire Point, and Tasco Optima.

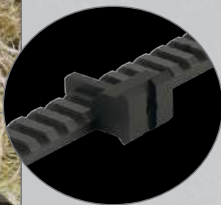


A600 Picatinny Side Mount Rail Adapter

For use with Flat Top AR-15 and other tactical firearms. Provides an accessory mount without having to modify the firearm. Fits Mil-Spec 1913 mounting rails and is made from aluminum. Matte black only.



A600 mount disassembled- Securely fits on to Picatinny rail with arm clamp and screw.



Mounts to any Picatinny style rail

A645 Team Warne 45° Picatinny Side Mount

This mount is designed for the Flat Top AR-15 and other tactical style firearms. It provides a 45° accessory platform that attaches to a Picatinny rail. The A645 mount can also be mounted to the rail on your hand guard to allow your back-up sight to be in perfect alignment with the sight on your R.A.M.P. mount. This is a simple installation and requires no modification to your firearm. Available in Matte Black, Red, Blue, Dark Earth and Zombie Green finishes with 'Team Warne' lasered on the top of the mount.

A645 MOUNT FEATURES

- › Machined 6061 aluminum with a durable anodized finish - Available in matte black, red, blue, dark earth and zombie green
- › Designed to co-witness with the side rails of the R.A.M.P. Mount to allow the use of pop up or fixed type combat/open sights
- › 45° offset offers a mounting position for flashlights, lasers, slings or open sights without obstructing your sight line

PART NUMBER	FINISH COLOR
A645TW	Black
A645R	Red
A645BU	Blue
A645DE	Dark Earth
A645Z	Zombie Green



The A645 Mount aligns perfectly with the side rail on the R.A.M.P. Mount




Troy Micro BattleSights (not included with the R.A.M.P. Mount or A645 mount)

Skeleton Mount

The next generation of AR Scope Mounts has arrived... Based on our innovative R.A.M.P. Mount platform, the newest addition to our AR scope mounting line has all the features you've been looking for. This new mount offers a lightweight scope mounting solution for your AR style firearm with the same durable, return to zero reputation that you've come to expect from Warne. CNC precision machined from 6061 aluminum, and utilizing steel fasteners in all the right places, we've been able to reduce the weight by over 30%, compared to our R.A.M.P. mount. Anodized in 5 popular colors, it's time to "Set Your Sights on Warne".



SKEL MODELS

	Part Number	Available Finish <i>Black, Red, Blue, Dark Earth</i>	Mount Style <i>Quick Detach or Fixed</i>	Tube Size
	SKEL1 SKEL1R SKEL1BU SKEL1DE	Black Red Blue Dark Earth	Fixed Fixed Fixed Fixed	1" 1" 1" 1"
	SKEL30 SKEL30R SKEL30BU SKEL30DE	Black Red Blue Dark Earth	Fixed Fixed Fixed Fixed	30mm 30mm 30mm 30mm
	SKEL34 SKEL34R SKEL34BU SKEL34DE	Black Red Blue Dark Earth	Fixed Fixed Fixed Fixed	34mm 34mm 34mm 34mm

SKEL MOUNT FEATURES

- › Lightweight, Skeletonized 6061 aluminum body and caps to reduce overall weight without sacrificing reliability.
- › #8 Torx style fasteners with steel threaded inserts to prevent stripping.
- › Cantilever forward design to provide additional eye relief.
- › Places your optic at the Ideal Height for AR and similar platforms .
- › 1/2" tactical nut attachment, 65 in/lb. of torque is recommended.
- › Available in 1", 30mm & 34mm tube sizes and matte black, dark earth, blue and red finishes.



WARNE TOOLS

» TW1 Torque Wrench

Built for Warne by California Torque Products, this tool allows the shooter to precisely tighten the Torx style screws to Warne's recommended torque setting of 25 in/lb. The simple break away design lets the operator know when the proper torque has been reached. Designed for both bases and rings, this unit is a must have when installing or re-installing Warne mounting systems.



» TW65 TORQUE WRENCH

Also, built for Warne by California Torque Products, this new tool allows the shooter to precisely tighten the 1/2" hex nut to the proper torque setting of 65 in/lb. This unit is a must have when installing Warne's Tactical and AR style mounts.



» ST1 Shooting Tool

The Warne Shooting Tool is designed to be a shooter's one and only tool when going to the range. This piece has five hex drivers, three Torx style drivers and one 5mm flat blade.



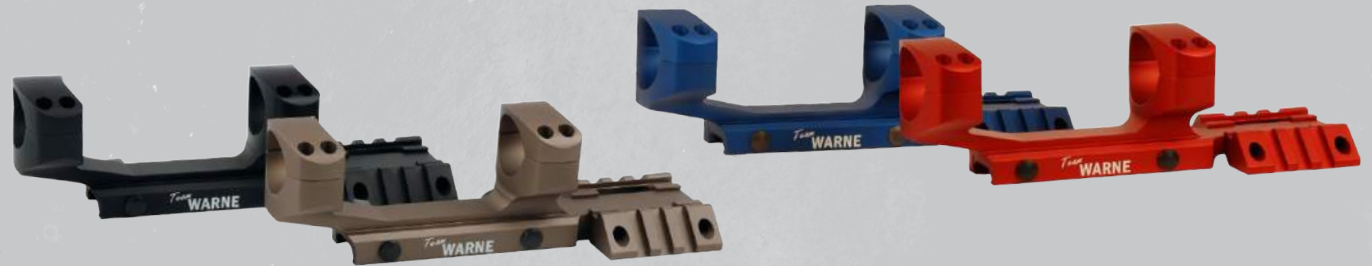
Now there's a mounting platform designed for the serious shooting enthusiast and professionals worldwide! The WARNE **Rapid Acquisition Multi-Sight Platform**, or R.A.M.P, is a cantilever style scope mounting platform that allows proper scope installation on the popular AR-15 rifle. By design, the AR platform was intended for fixed iron sights and did not offer an acceptable mounting surface for optics. As the weapon system evolved from the military designate M16A1 to the M16A3 and M4, Picatinny mounting systems became standard equipment. However, the rail system found on the A3 and the M4 weapons still did not allow a variable power optic to be mounted far enough forward with conventional scope mounts. The new WARNE R.A.M.P modular mounting system positions the front ring forward of the upper receiver by 1 3/4". This allows the optics to be mounted farther forward enabling the shooter to have proper head orientation whether upright or prone without sacrificing or compromising due to improper positioning.

The Warne R.A.M.P also offers unique 45° mounting rails on both sides of the optic. As you know, variable power optics are great for distance but not CQB scenarios. Additionally, CQB sights are great for close quarters and entry scenarios but not for distance shots or target ID. So, which one do you choose? Why not have both? The R.A.M.P provides exactly that.

The primary sight can be as small as a 1-4 or as large as an 8.5-25 or a larger variable power optic. With a mini red dot on one or both sides of the ocular, a shooter can transition from scope to dot or dot to scope in less than a second by rotating the weapon 45 degrees left or right. While the technique is not new, the position of the red dot is. By placing the sight under the ocular of the scope, we have provided a wider field of view through the mini red dot which makes acquiring the dot in the sight faster than you can imagine. And once again, you won't have to sacrifice your shooting position when transitioning from sight to sight.

R.A.M.P. MOUNT FEATURES




- › 6000 Series Aluminum
- › #8 Torx style fasteners with steel threaded inserts
- › Cantilever design for proper optics mounting
- › Up to 2 integrated mounting rails (with the option to remove one or both) for optimal sighting or light systems
- › 1/2" tactical nut attachment, 65 in/lb. of torque is recommended
- › Available in 1", 30mm and 34mm tube sizes and black matte, red, blue, dark earth and zombie green finishes



NEW! Zombie Green R.A.M.P.
Mount - 30mm size only
*See page 5 for more information



R.A.M.P. MODELS

	Part Number	Available Finish Black, Red, Blue, Dark Earth, Zombie Green	Mount Style Quick Detach or Fixed	Tube Size
	RAMP1	Black	Fixed	1"
	RAMP1TW*	Black	Fixed	1"
	RAMP1R*	Red	Fixed	1"
	RAMP1BU*	Blue	Fixed	1"
	RAMP1DE*	Dark Earth	Fixed	1"
	RAMP30	Black	Fixed	30mm
	RAMP30TW*	Black	Fixed	30mm
	RAMP30R*	Red	Fixed	30mm
	RAMP30BU*	Blue	Fixed	30mm
	RAMP30DE*	Dark Earth	Fixed	30mm
	RAMP30Z*	Zombie Green	Fixed	30mm
	RAMP34	Black	Fixed	34mm
	RAMP34TW*	Black	Fixed	34mm
	RAMP34R*	Red	Fixed	34mm
	RAMP34BU*	Blue	Fixed	34mm
	RAMP34DE*	Dark Earth	Fixed	34mm

*Indicates Team Warne is lasered on the side of the mount





The R.A.M.P. Mount features two 45° mounting rails with the ability to remove one or both rails depending on your personal preference.

The R.A.M.P. Mount is now available in a 34mm tube size.



Team

WARNE

Warne Scope Mounts has been supporting the shooting sports for over 20 years. We are proud to sponsor these top notch competitors that represent our company and product so well. This year Team Warne includes 10 pro shooters and we hope to set new records again this year! For more info on Team Warne and to read individual bios check out our website at www.warnescopemounts.com/team-warne/.

PRO STAFF



KEITH GARCIA

Hometown: San Ramon, CA

Shooting Competitively Since: 2002

Most Recent Accomplishments:

- 3 Gun Nation Professional Series Match #1 - Match winner
- Bay Area Rifle Championship - Match winner
- California Action Shotgun Championship - Match winner
- 3 Gun Nation Professional Series Match #2 - 2nd Place
- Superstition Mountain Mystery 3 Gun - 3rd Place

"My gear takes a beating flying across the country to shoot matches. The R.A.M.P. from Warne Scope Mounts has never let me down. Even when other parts of my gear have been broken, bent, dented and scratched; my scope has never lost zero!"

-Keith Garcia

"Over the last couple of years, Warne has become THE leader in scope mounts. Their support of the shooting sports and 3 gun in particular has been huge! As far as I'm concerned, there isn't a better mount on the market, or a better company to shoot for. Thanks for all the support Warne!!!"

-Travis Gibson



TRAVIS GIBSON

Hometown: Caldwell, ID

Shooting Competitively Since: 2006

Most Recent Accomplishments:

- 3 Gun Nation Division Series - 11th Place Scoped Tactical
- Fallen Brethren 3 Gun - 7th Place Scoped Tactical
- Northwest Multigun - 4th Place Scoped Tactical
- Crimson Trace Midnight 3 Gun - 7th Place Overall

- MGM Grand Nationals Man on Man - Limited Champion
- MGM Ironman - 2nd Place Trooper Division
- Idaho Glocks Only Handgun Championship - 4th Place Overall
- Ephrata Sportsman's Challenge 3 Gun - 3rd Place Overall



CHUCK ANDERSON

Hometown: Newberg, OR

Shooting Competitively Since: 2001

Most Recent Accomplishments:

- NW Multigun - 2nd Place Open
- MGM Spring Multigun - Open Champion

USPSA L10 Nationals - 12th Place Overall

"I've been using Warne scope mounts for over a decade. They have never let me down. The products are rock solid, well thought out and just plain work. Using Warne on my rifles gives me the confidence I need to compete against the best shooters in the world."

-Chuck Anderson

"I think that Warne Scope Mounts are awesome! You couldn't ask for a better scope mount. I'm glad that they support the shooting sports. Thanks Warne for everything you do."

-Wyatt Gibson



WYATT GIBSON

Hometown: Caldwell, ID

Shooting Competitively Since: 2005

Most Recent Accomplishments:

- 3 Gun Nation Junior Division Series - 7th Place
- MGM Ironman - 3rd Place Junior
- Northwest Multigun - 3rd Place Junior

- Crimson Trace Midnight 3 Gun - 4th Place Junior
- Rocky Mountain 3 Gun - 2nd Place Junior Scoped Tactical, 3rd overall Junior
- Powder River 3 Gun Nation Club Match - High Junior



I have Warne scope mounts and rings on all my competition and hunting rifles. They have never failed me. The RAMP mount in particular offers a lot of versatility in one package. BUT I'm a big fan of the A645~45 adapter because (unlike everybody else) I prefer to mount my Deltapoint out on the handguard instead of close to the eye like the R.A.M.P. does.

I'm also a big fan of the TW-1 and TW-65 torque wrenches because they keep me from over tightening and damaging stuff. Somehow I don't think I'm the only one who needs this help.

-Kelly Neal

Hometown: Mesa, AZ

Shooting Competitively Since: 2001

Most Recent Accomplishments:

- Superstition Mountain Mystery 3 Gun - 1st Place Tactical Limited
- Northwest Multigun - 1st Place Tactical Limited
- JP Rocky Mountain 3 Gun - 2nd Place Tactical Limited
- Spartan Tactical Fallen Brethren 3 Gun - 2nd Place Tactical Limited
- Larue Texas State Multigun - 5th Place Tactical Scope



Hometown: Livermore, CA

Shooting Competitively Since: 2000

Most Recent Accomplishments:

- ICORE Southwest Regional Revolver Championship - 1st Place Limited Division, 2nd Place Overall
- NW Multigun Challenge - 6th Place Tactical



Warne Scope Mounts are rock solid!! I have used them to win numerous events over the last two seasons and I continue to be impressed by the durability of their mounts. They hold zero better than any mount I have used and I've yet to have a screw come loose or change of zero that I hear people using other mounts complain about. Thanks Warne!!

-Clint Upchurch

Hometown: Inman, SC

Shooting Competitively Since: 2005

Most Recent Accomplishments:

- Ozark 3 Gun Championships - 1st Place Open
- AR15.com/Rockcastle Pro AM 3 Gun Championship - 1st Place Open
- FNH USA 3 Gun Championship - 1st Place Open
- Tarheel 3 Gun Championship - 1st Place Open
- Colt 3 Man 3 Gun Championship - 1st Place



"I love my Warne R.A.M.P. Mounts! Not only are they the highest quality most versatile mount on the market, they're made by one of the most supportive companies in the shooting sports."

-Craig Outzen

Hometown: Murray, UT

Shooting Competitively Since: 2006

Most Recent Accomplishments:

- 3 Gun Nation Divisional Series - 4th overall in Open Division

Team

WARNE PRO STAFF



TAHNEE TORRES

"One of the most important things to a competitive shooter is having reliable gear. Without a doubt, I know I can count on the Warne R.A.M.P. Mount to be secure and maintain my scope's zero. It's one less thing I have to worry about."
 -Tahnee Torres

Hometown: Henderson, NV

Shooting Competitively Since: 2009

Most Recent Accomplishments:

JP Rocky Mountain 3 Gun - High Lady Tactical Optics

USPSA Multigun Nationals- 2nd Lady Tactical Optics

Superstition Mountain Mystery 3Gun- 3rd Lady Tactical Optics



TATE MOOTS

"Warne R.A.M.P. mounts and rings are tough, I have dropped and thrown my rifles with no shift of zero."
 -Charles "Tate" Moots

Hometown: Albuquerque, NM

Shooting Competitively Since: 2001

Most Recent Accomplishments:

Rocky Mountain 3 Gun - 1st Place He-Man Scope

Fallen Brethren 3 Gun - 6th Place Heavy Tactical Optics

USA

FNH



WARNE SCOPE MOUNTS is also proud to sponsor

TEAM FNH USA

For more info visit <http://www.fnhusa.com/l/about/team-fnh-usa/>



WARNE SCOPE MOUNTS proudly sponsors many events including matches, championships, competitive and law enforcement training, junior shooters camps, community events and various other organizations throughout the year.



TOP MATCHES WE SPONSOR:

- Blue Ridge Mountain Championships
- MGM Ironman
- Nor Cal Tactical Bolt Rifle Challenge
- Northwest Multi-Gun Challenge
- Rocky Mountain 3-Gun
- Superstition Mountain Mystery 3-Gun
- USPSA Area 1 Multi-Gun Championships
- MGM Targets Junior Shooters Camp
- Long Range Rifle Shoot
- US National Steel Championship
- ICORE Southwest Regional Revolver Championship
- FNH USA Midwest 3-Gun Championship
- AR15.com/Rockcastle 3-Gun Championships
- Adams Arms Ozark 3-Gun Championships
- USPSA Multi-Gun Nationals
- FNH USA/3 Gun Nation Championships
- Smith & Wesson International Revolver Championships
- Shooting Industry Masters
- MGM Targets Man on Man Grand Nationals
- NRA National Matches
- Sniper Week West
- Spartan's Tactical 3-Gun Challenge
- All Because of Children Shooter's Match

**Email us at info@warnescopemounts.com if you have an upcoming event that you would like us to sponsor.*



We are a proud supporter of FNH USA 3 GUN NATION. Visit www.3gunnation.com for more information and click on '3GN-The Series' for the 2013 schedule.



WARNE SCOPE MOUNTS
9500 SW Tualatin Road
P.O. BOX 2390
Tualatin, OR 97062
U.S.A.

